

Tango XL

Extra space, comfort and stability for higher care demands

5100 5750

Tango XL shower toilet chair

The Tango XL shower toilet chair is specially developed for clients who need extra space, comfort, and secure support during daily care routines. With its reinforced construction and generous seating dimensions, the chair provides a safe and comfortable solution for users with a higher body weight—while maintaining smooth manoeuvrability for caregivers.

Designed for use in professional healthcare environments, the Tango XL combines practical functionality with ergonomic comfort. Foldable armrests and swing-away footrests support easy transfers, while the hygienic removable seat and smooth-rolling castors with brakes ensure safe and efficient handling during showering and toilet use.

A reliable choice for care facilities that aim to deliver inclusive care with maximum comfort, durability, and hygiene

Highly Stable Design. The robust frame, low center of gravity and braked castors ensure maximum stability during transfers and care moments.

Ergonomic Use. Equipped with smart handle and four braked wheels to simplify maneuvering, ensuring high stability on various surfaces and minimizing the strain on the caregiver's joints.

Reliable & Long-Lasting. Built for daily care and backed by a 60-month warranty, offering a dependable performance.

Antibacterial & Corrosion-Resistant. The antibacterial coating with silver-ion supports hygiene and infection control, while the corrosion-resistant frame with smooth surfaces ensures durability and easy cleaning.

 Discover our tools in action through the Interactive Product videos on our website: www.lopital.com



Suitable for people with very slightly to severely reduced mobility

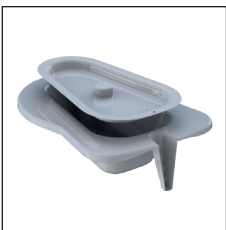
Technical specifications

Max. load	250 kg / 550 lbs
Product weight	27 kg / 59.2 lbs
Seat width	55 cm / 21.7 inch
Seat depth	49 cm / 19.3 inch
Seat height	53 cm / 20.9 inch



Optional

6950 1104
Plastic bedpan
and lid.



Options:

- 6840 5500 Adjustable head/neck support
- 6950 1104 Bedpan with lid plastic
- 6975 8044 Seatbelt 2-point
- 6975 8045 Seatbelt 4-point
- 6960 8026 Comfort leg support
- 7057 0508 Wheel 125 mm Directional

Technical specifications

Total length base frame	109 cm / 42.9 inch
Total width base frame	67 cm / 27.2 inch
Turning radius	120 cm / 47.2 inch

LFT5750-2026-01 EN



For more information also visit our website: www.lopital.com
Lopital Nederland B.V., Laarakkerweg 9, 5061 JR Oisterwijk
Tel +31 (0)13 52.39.300, E-mail info@lopital.nl, www.lopital.nl

All of the aids produced by Lopital comply with the applicable standards for Class I medical products (MDR (EU) 2017/745).



ISO CERTIFIED
9001 - 13485 - 14001

MADE IN
THE NETHERLANDS



Copyright ©2026 Lopital. All rights reserved.