

The hygiene and transfer specialist





**The hygiene and transfer
specialist for optimal
comfort.**

Content

Introduction	05
Shower toilet chairs	07
Shower trolleys	21
Shower stretchers	25
Dressing tables	26
Active standup aid	27
Added value table	30
Accessories	34
StatMeter	35
Mobility indicator	36





Designed for a positive
shower experience.

Dutch Design

hygiene solutions for easy and dignified life

Lopital is the specialist in hygiene and care solutions that make life easier and more dignified. With Dutch innovation and craftsmanship, we create products that combine comfort for the client with ease of use for the caregiver. Our focus on quality, durability, and antibacterial protection ensures safe and effortless care – **every single day**.



60-months warranty: built for daily care and backed by a 60-month warranty, offering a dependable performance.



Hassle-free maintenance: effortless care with Plug&Play functionality for instant setup and hassle-free use.



Antibacterial coating: effective long-term protection from germs and bacteria thanks to silver ions.



Designed for sustainability: reduced carbon footprint during the entire lifecycle of the product.



Recycled materials: made of up to 75% recycled aluminium.



Guaranteed Quality

All our products are designed and manufactured in the Netherlands, ensuring top-notch quality and craftsmanship. And we take great pride in this. Furthermore, we provide a 60-month warranty on all our products, ensuring your peace of mind and satisfaction with your purchase.

StatMeter®

The StatMeter is an online tool, developed by LOCOMotion and Lopital, that helps caregivers assess their static load, raise awareness, and provides tips to prevent strain and absenteeism.





**Only the best products.
Quality and safety always
come first.**

Shower toilet chairs

At Lopital, we believe that safe and dignified care starts with the right support — for both client and caregiver. Our shower-toilet chairs are designed to provide comfort and independence for clients, while at the same time reducing physical strain for caregivers.

Traditional showering solutions often force caregivers into awkward postures, leading to static back and shoulder strain. Lopital addresses this challenge with ergonomically designed, height-adjustable shower-toilet chairs. These chairs not only create a safer and more comfortable experience for clients, but also help prevent physical overload for caregivers.

By combining safety, comfort, and ease of use, Lopital shower-toilet chairs contribute directly to healthier working conditions in healthcare, supporting a sustainable balance between high-quality care and caregiver well-being.

Well-developed hygiene products
that allow safe and comfortable showering.

All of the aids produced by Lopital fulfil the following norms for medical products Class I (MDR (EU) 2017/745)



For more information
visit our website
www.lopital.com



5100 5100

Nemo

Suitable for people with slightly reduced to very severely reduced mobility



Tilting function up to 30° backwards.



Control handle for tilting system.



Standard equipped with a head / neck support. Adjustable in height and depth.



Option: Adjustable comfort leg supports (Product no. 6960 8026).



Technical specifications

Product no.	Product description	Outside depth	Outside width	Seat depth	Seat width	Seat height	Max. load kg	Max. load lbs	Product weight in kg	Product weight in lbs	Tilt
5100 5100	Nemo shower toilet chair	100	66	44	47	54	150	330	24	53	30°

All measurements in this matrix are in centimeters.

5100 5199 Flexo

Suitable for people
with slightly reduced to very
severely reduced mobility



Technical specifications

Product no.	Product description	Outside depth	Outside width	Seat depth	Seat width	Seat height adjustment	Max. load kg	Max. load lbs	Product weight in kg	Product weight in lbs	Tilt
5100 5199	Flexo shower toilet chair	104	73	44	47	50 - 105	150	330	38	84	20°

All measurements in this matrix are in centimeters.

Functional and simple since 1993.

See page 34 for
additional accessories.



Option: Head / neck support.



High / low control
by foot pump.



Option: Straight armrests.



Option: Adjustable comfort leg
supports (Product no. 6960
8026).

5100 5500 Elexo

Suitable for people with slightly reduced to very severely reduced mobility



Shock-free and comfortable height adjustment.

See page 34 for additional accessories.



Independent, fold-up upholstered armrests with front lock.



Option: Head / neck support.



Option: Adjustable comfort leg supports (Product no. 6960 8026).



Charging point with magnetic coupling, no separate battery required.

Technical specifications

Product no.	Product description	Outside depth	Outside width	Seat depth	Seat width	Seat height adjustment	Max. load kg	Max. load lbs	Product weight in kg	Product weight in lbs	Tilt
5100 5500	Elexo shower toilet chair	104	70	44	47	50 - 105	180	400	47	104	20°

All measurements in this matrix are in centimeters.

5100 5300

Elexo XXL

Suitable for people with moderately reduced to very severely reduced mobility



Technical specifications

Product no.	Product description	Outside depth	Outside width	Seat depth	Seat width	Seat height adjustment	Max. load kg	Max. load lbs	Product weight in kg	Product weight in lbs	Tilt
5100 5300	Elexo XXL shower toilet chair	119	89	54	70	50 - 105	220	485	71	157	20°

All measurements in this matrix are in centimeters.

Because good hygiene must also be accessible to obese clients.

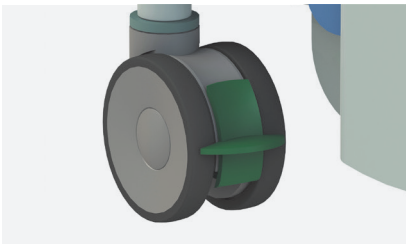
See page 34 for additional accessories.



Two parted seat with front and back openings.
Easy removable snaplock seat.



Swing-out and removable footrests. Height adjustable. Extended fully swing-out armrests.



Fitted with a directional wheel.



Option: Head / neck support.

5100 5600

Reflex

with height adjustable footrests

Suitable for people with moderately reduced to very severely reduced mobility



Optimal comfort for both caregivers and clients.

See page 34 for additional accessories.



With height adjustable footrests.



Charging point with magnetic coupling, no separate battery required.



Easy-to-use touch controls in the backrest.

Technical specifications

Product no.	Product description	Outside depth	Outside width	Seat depth	Seat width	Seat height adjustment	Height adjustable footrests	Max. load kg	Max. load lbs	Product weight in kg	Product weight in lbs	Tilt
5100 5600	Reflex 5600 shower-toilet chair with height adjustable footrests	106	70	44	47	50 - 100	25	135	300	53	117	30°

All measurements in this matrix are in centimeters.

5100 5605
Reflex

Suitable for people
 with moderately reduced to very
 severely reduced mobility



Technical specifications

Product no.	Product description	Outside depth	Outside width	Seat depth	Seat width	Seat height adjustment	Max. load kg	Max. load lbs	Product weight in kg	Product weight in lbs	Tilt
5100 5605	Reflex 5605 shower toilet chair	116	70	44	47	50 - 100	135	300	53	117	30°

All measurements in this matrix are in centimeters.

Even more possibilities
 with the Reflex.

See page 34 for additional accessories.



Option: Adjustable comfort leg supports (Product no. 6960 8026).



Independent, fold-up upholstered armrests with front lock.



Foldable and swing-out footrests.



FLEXO?

The chair will reach a maximum inclination of 20° in the highest position

Maximum load 150 kg

Upholstered seat with seat opening

Upholstered frontlocking foldable armrests

Rail for toilet bucket or bedpan

Simple adjustable hydraulic height control

Four double-brake castors

Foldable footrests with calf protection

Footrests touch the ground when in the lowest position



OR REFLEX?

Upholstered frontlocking foldable armrests

Head / neck support, height and depth-adjustable

Upholstered seat with seat opening

Easy-to-use touch controls on backrest

Rail for toilet bucket or bedpan

Height-adjustable legrest and calf protection

Electrically operated tilt mechanism

Electrically operated height adjustment

Emergency lowering device

Four double-brake castors

Maximum load 135 kg

reflex

5100 5700

Tango

Suitable for people with very slightly reduced to moderately reduced mobility



Technical specifications

Product no.	Product description	Outside depth	Outside width	Seat depth	Seat width	Seat height	Max. load kg	Max. load lbs	Product weight in kg	Product weight in lbs
5100 5700	Tango shower toilet chair	84	66	44	47	55	180	400	19	42

All measurements in this matrix are in centimeters.

Functional and simple.

See page 34 for additional accessories.



Foldable armrests.



Foldable and swing-out footrests.



PU seat with toilet opening.



Option: Holder disposable Bedpan (Product no. 6950 1110).

5100 5705

Tango XL

Suitable for people with very slightly reduced to moderately reduced mobility



Technical specifications

Product no.	Product description	Outside depth	Outside width	Seat depth	Seat width	Seat height	Max. load kg	Max. load lbs	Product weight in kg	Product weight in lbs
5100 5705	Tango XL shower toilet chair	100	69	47	56	53	250	550	24	53

All measurements in this matrix are in centimeters.

Suitable for obese clients up to 550 lbs / 250 kg.

See page 34 for additional accessories.



Two parted seat with front and back openings. Easy removable snaplock seat.



Foldable armrests.



Swing-out and removable footrests. Height adjustable.



Option: Adjustable comfort leg supports (Product no. 6960 8026).

5100 5800

Tango XXL

Suitable for people with very slightly reduced to moderately reduced mobility



Safe and comfortable care of obese clients.

See page 34 for additional accessories.



Swing-out and removable footrests. Height adjustable. Extended fully swing-out armrests.



Two parted seat with front and back openings. Easy removable snaplock seat.



Suitable for obese clients up to 800 lbs / 360 kg.

Technical specifications

Product no.	Product description	Outside depth	Outside width	Seat depth	Seat width	Seat height	Max. load kg	Max. load lbs	Product weight in kg	Product weight in lbs
5100 5800	Tango XXL shower toilet chair	97	83	54	70	51	360	800	31	68

All measurements in this matrix are in centimeters.

Timo

Suitable for people
with very slightly reduced to
moderately reduced mobility



Technical specifications

Product no.	Product description	Outside depth	Outside width	Seat depth	Seat width	Seat height	Max. load kg	Max. load lbs	Product weight in kg	Product weight in lbs
5400 6005	Timo shower stool	63	57	49	47	50	135	300	15	33
5400 6020	Timo 6020 shower chair	63	57	49	47	50	135	300	15	33
5400 6021	Timo 6021 shower toilet chair	63	57	49	47	50	135	300	15	33
5400 6030	Timo 6030 shower toilet chair	63	57	49	47	54	135	300	15	33
5400 6035	Timo 6035 shower toilet chair	91	57	49	47	54	135	300	16	35

All measurements in this matrix are in centimeters.



5400 6035
Timo 6035 shower toilet chair



5400 6005
Timo shower stool



5400 6030
Timo 6030 shower toilet chair



5400 6020
Timo 6020 shower chair



5400 6021
Timo 6021 shower toilet chair

Safe, hygienic
and comfortable.

See page 34 for additional accessories.



Easy removable snap lock seat.



**Continuous innovation
and development.**

Shower Trolleys & Stretchers

For clients who need to be cared for in a lying position, Lopital shower trolleys and stretchers provide a safe and comfortable solution. They ensure dignified hygiene care while creating ease of movement for caregivers.

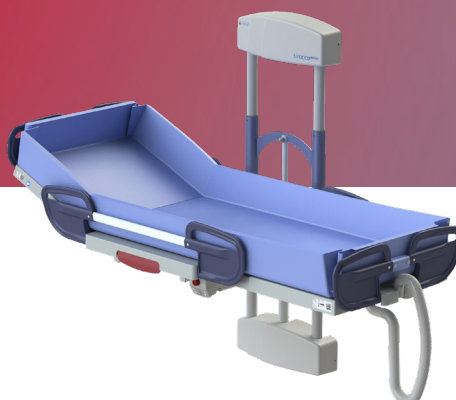
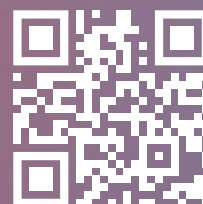
Traditional methods often demand heavy lifting and awkward postures. Our mobile and wall-mounted stretchers are designed to minimize transfers and reduce physical strain, allowing caregivers to work closer to the client in an ergonomic way. Height-adjustable options — both hydraulic and electric — make it possible to align the stretcher with the bed for smooth, horizontal transfers.

By reducing unnecessary lifting and supporting active client participation where possible, Lopital shower trolleys and stretchers contribute to safer, more efficient care. The result: more comfort and independence for clients, and healthier working conditions for caregivers.

Shower trolleys



For more information
visit our website
www.lopital.com



6100 2010 / 6100 2060

Marina Deluxe

Suitable for people
with severely reduced to very
severely reduced mobility



Marina Deluxe hydraulic.



Marina Deluxe electric.



Electric or by means of a gas spring back adjustment (Marina Deluxe).



Half-central braking system (Marina Deluxe).



Side rail with lowered middle section for providing optimum care (Marina Deluxe & Basic).

Technical specifications

Product no.	Product description	Outside length	Outside width	Inside length	Inside width	Lying surface height adjustment	Max. load kg	Max. load lbs	Product weight in kg	Product weight in lbs
6100 2010	Marina Deluxe hydraulic shower trolley	186 206 226	81	170 190 210	70-80	45-95	227	500	80	176
6100 2060	Marina Deluxe electric shower trolley	186 206 226	81	170 190 210	70-80	45-95	227	500	80	176
6720 0010	Mattress Deluxe 186 cm	-	-	170	70	-	-	-	-	-
6720 0020	Mattress Deluxe 206 cm	-	-	190	70	-	-	-	-	-
6720 0030	Mattress Deluxe 226 cm	-	-	210	70	-	-	-	-	-

All measurements in this matrix are in centimeters.

6100 2000 / 6100 2050

Marina Basic

Suitable for people
with severely reduced to very
severely reduced mobility



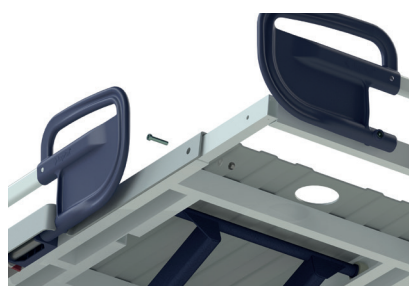
Light, comfortable
and versatile
in use.



Marina Basic electric.



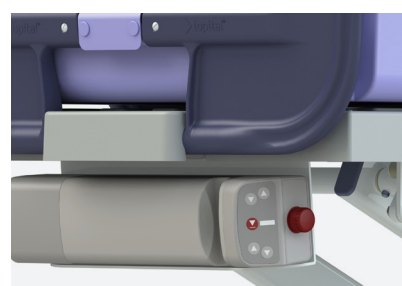
Marina Basic hydraulic.



With a standard built-in length adjustment
(Marina Deluxe & Basic).



Angled position (Anti-Trendelenburg)
(Marina Deluxe & Basic).



Control box emergency stop (Marina Deluxe & Basic
electric).

Technical specifications

Product no.	Product description	Outside length	Outside width	Inside length	Inside width	Lying surface height adjustment	Max. load kg	Max. load lbs	Product weight in kg	Product weight in lbs
6100 2000	Marina Basic hydraulic shower trolley	186	81	170	70-80	45-95	227	500	76	168
		206		190						
		226		210						
6100 2050	Marina Basic electric shower trolley	186	81	170	70-80	45-95	227	500	76	168
		206		190						
		226		210						
6720 0005	Mattress Basic 186 cm	-	-	170	70	-	-	-	-	-
6720 0015	Mattress Basic 206 cm	-	-	190	70	-	-	-	-	-
6720 0030	Mattress Deluxe 226 cm	-	-	210	70	-	-	-	-	-

All measurements in this matrix are in centimeters.

6200 4015

Amfora

Suitable for people with moderately reduced to very severely reduced mobility



6200 4015
Amfora hydraulic shower trolley

Technical specifications

Product no.	Product description	Outside length	Outside width	Inside length	Inside width	Lying surface height adjustment	Max. load kg	Max. load lbs	Product weight in kg	Product weight in lbs
6200 4015	Amfora hydraulic shower trolley	190	82	180	70	50 - 100	150	330	63	139

All measurements in this matrix are in centimeters.

6100 2500 / 6100 2505 / 6100 2510

Sirocco Deluxe & Basic

Suitable for people
with severely reduced to very
severely reduced mobility



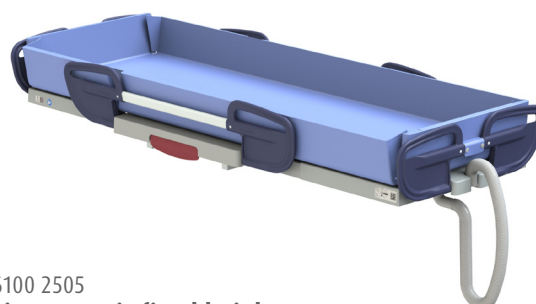
Technical specifications

Product no.	Product description	Outside length		Outside width	Inside length		Inside width	Lying surface height adjustment	Max. load kg	Max. load lbs	Product weight in kg	Product weight in lbs
6100 2500	Sirocco Basic shower stretcher	186	206	95	170	190	70 - 75	45 - 95	227	500	71	157
6100 2505	Sirocco Basic fixed height shower stretcher	186	206	95	170	190	70 - 75	-	150	330	75	-
6100 2510	Sirocco Deluxe shower stretcher	186	206	95	170	190	70 - 75	45 - 95	227	500	73	161
6720 0005	Mattress Basic 186 cm	-	-	-	170	70	-	-	-	-	-	-
6720 0015	Mattress Basic 206 cm	-	-	-	190	70	-	-	-	-	-	-
6720 0010	Mattress Deluxe 186 cm	-	-	-	170	70	-	-	-	-	-	-
6720 0020	Mattress Deluxe 206 cm	-	-	-	190	70	-	-	-	-	-	-

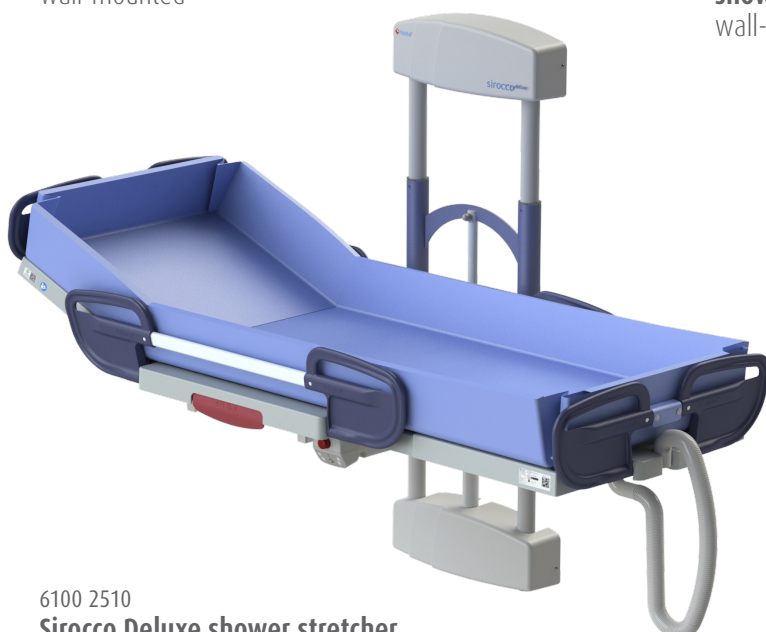
All measurements in this matrix are in centimeters.



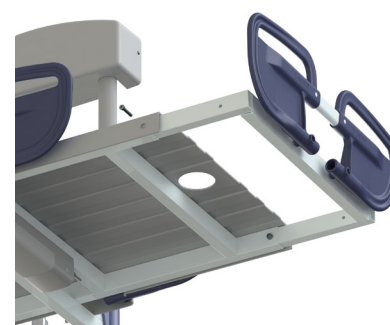
6100 2500
Sirocco Basic shower stretcher
wall-mounted



6100 2505
Sirocco Basic fixed height shower stretcher
wall-mounted



6100 2510
Sirocco Deluxe shower stretcher
wall-mounted



With a standard built-in length adjustment
(Sirocco Basic & Deluxe)

- Wall-mounted.
- Foldable.
- Shock-free electric adjustment from 45 to 95 cm.
- Folding down side rail.
- Removable battery.
- Adjustable backrest (6100 2510).
- Standard built-in length adjustment.

6500 4025 / 6500 5030

Vienna Deluxe & Basic

Suitable for people
with moderately reduced to very
severely reduced mobility



Technical specifications

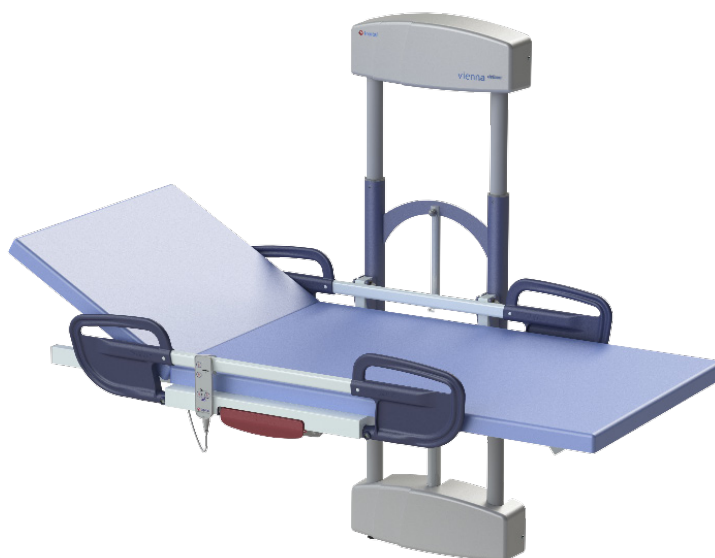
Product no.	Product description	Outside length	Outside width	Inside length	Inside width	Lying surface height adjustment	Max. load kg	Max. load lb	Product weight in kg	Product weight in lbs
6500 4025	Vienna hydraulic dressing table	190	82	188	70	56 - 106	150	330	59	130
6500 5030	Vienna Deluxe wall-mounted dressing table	190	91	188	70	45 - 95	227	500	75	165
6500 5035	Vienna Basic wall-mounted fixed height dressing table	190	-	188	70	-	150	330	73	160.9

All measurements in this matrix are in centimeters.

Simple operation
improves ease of use.



6500 4025
Vienna hydraulic dressing table



6500 5030
Vienna wall-mounted
dressing table



6500 5035
Vienna Basic wall-mounted fixed
height dressing table



Lotus.
Simply rise up.

5900 8200 / 5900 8250 / 5900 8270

Lotus

Suitable for people
with very slightly reduced to
moderately reduced mobility



5900 8200
Lotus

The Lotus and Lotus XL are designed for users with an average height between 1.70 and 1.95 m.
The Lotus Compact is designed for users with an average height between 1.35 and 1.70 m.



Lotus en Lotus compact:

- Maximum load capacity of 200 kg

Lotus XL:

- Maximum load capacity of 227 kg
- Extra wide space between the seat shells

Lotus, Lotus compact and Lotus XL:

- Comfortable lower leg supports
- Swivel seat sections with snap lock
- Mechanical leg spread
- Variable attachment points
- Ideal seating angle
- Handle for easy maneuvering
- Sturdy footplate
- 2 braked swivel castors
- Height-adjustable leg support
- Antibacterial coating on frame
- Sleek finish for optimal cleaning and disinfection

Technical specifications

Product no.	Product description	Material	Lifting capacity kg/lbs	Length x width x height	Width legs	Mechanical base spreading	Weight kg	Weight lbs	Client length
5900 8200	Lotus active standup aid	steel	200 kg 440 lbs	96 cm x 66 cm x 109 cm 37,8" x 26" x 43,3"	66 cm 26"	49 cm - 86 cm 19,3" - 33,9"	32	70	170 cm - 195 cm 67" - 77"
5900 8250	Lotus Compact active standup aid	steel	200 kg 440 lbs	96 cm x 66 cm x 101 cm 37,8" x 26" x 39,8"	66 cm 26"	49 cm - 86 cm 19,3" - 33,9"	32	70	135 cm - 170 cm 53" - 67"
5900 8270	Lotus XL active standup aid	steel	200 kg 440 lbs	96 cm x 66 cm x 110 cm 37,8" x 26" x 43,3"	66 cm 26"	49 cm - 86 cm 19,3" - 33,9"	32	70	170 cm - 195 cm 67" - 77"

Lotus.
Simply rise up.

Suitable for people
with very slightly reduced to
moderately reduced mobility



5900 8250
Lotus Compact

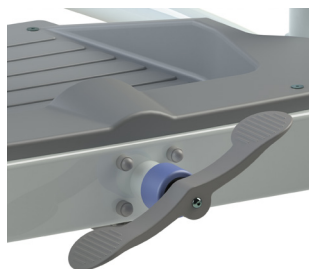


5900 8270
Lotus XL

Active standup aid



Rotating seat parts.



Mechanical base spreading.



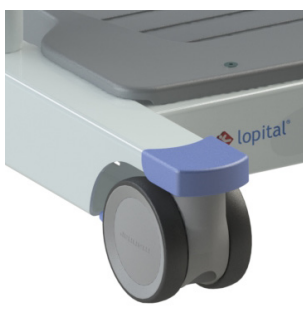
Lotus and Lotus Compact



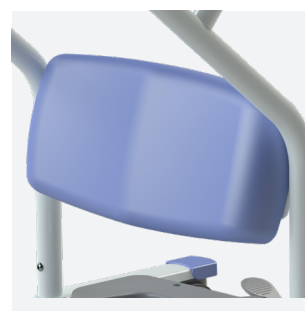
Lotus XL



Variable contact points.



Wheel locking.



Comfortable lower leg support.

Added value table shower-toilet chairs

Product no.	Product description	Adjustable hydraulic/ electric or fixed	Mobile	Height adjustable	Head / neck support	Tilt mechanism	Shower	Toilet	Comfort PUR	Tech. lifespan min. 10 years*	Removable snaplock seat	Armrests with front locking	Can be wheeled over toilet	Obesity
5100 5100	Nemo shower toilet chair	pneumatic	•		•	•	•	•	•	•		option	•	
5100 5199	Flexo shower toilet chair	hydraulic	•	•	option	•	•	•	•	•		•	•	
5100 5500	Elexo shower toilet chair	electric	•	•	option	•	•	•	•	•		•	•	
5100 5300	Elexo XXL shower toilet chair	electric	•	•	option	•	•	•	•	•	•		•	•
5100 5600	Reflex 5600 shower toilet chair with height adjustable footrests	electric	•	•	•	•	•	•	•	•		•	•	
5100 5605	Reflex 5605 shower toilet chair	electric	•	•	•	•	•	•	•	•		•	•	
5100 5700	Tango shower toilet chair	fixed	•		option		•	•	•	•		option	•	

For instruction and demonstration go to: www.lopital.com/videos



5100 5100
Nemo shower toilet chair



5100 5199
Flexo shower toilet chair



5100 5500
Elexo shower toilet chair



5100 5300
Elexo XXL shower toilet chair



5100 5600
Reflex 5600 shower toilet chair
with height adjustable footrests



5100 5605
Reflex 5605 shower toilet chair



5100 5700
Tango shower toilet chair

* Technical life span is only guaranteed with correct use and maintenance in accordance with the supplier's instructions.

Product no.	Product description	Adjustable hydraulic/ electric or fixed	Mobile	Height adjustable	Head / neck support	Tilt mechanism	Shower	Toilet	Comfort PUR	Removable snaplock seat	Tech. lifespan min. 10 years*	Armrests with front locking	Can be wheeled over toilet	Obesity
5100 5705	Tango XL shower toilet chair	fixed	•		option		•	•	•	•	•		•	•
5100 5800	Tango XXL shower toilet chair	fixed	•		option		•	•	•	•	•		•	•
5400 6005	Timo shower stool	fixed	•				•		•	•	•	option		
5400 6020	Timo 6020 shower chair	fixed	•				•		•	•	•	option		
5400 6021	Timo 6021 shower toilet chair	fixed	•				•	•	•	•	•	option		
5400 6030	Timo 6030 shower toilet chair	fixed	•				•	•	•	•	•	option	•	
5400 6035	Timo 6035 shower toilet chair	fixed	•				•	•	•	•	•	option	•	

For instruction and demonstration go to: www.lophospital.com/videos



5100 5705
Tango XL shower toilet chair



5100 5800
Tango XXL shower toilet chair



5400 6005
Timo shower stool



5400 6020
Timo 6020 shower chair



5400 6021
Timo 6021 shower toilet chair



5400 6030
Timo 6030 shower toilet chair



5400 6035
Timo 6035 shower toilet chair

* Technical life span is only guaranteed with correct use and maintenance in accordance with the supplier's instructions.

Added value table shower trolleys, shower stretchers & dressing tables



6100 2010
Marina Deluxe hydraulic shower trolley



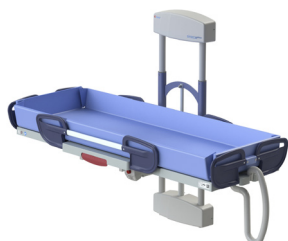
6100 2060
Marina Deluxe electric shower trolley



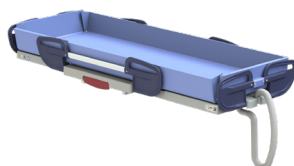
6100 2000
Marina Basic hydraulic shower trolley



6100 2050
Marina Basic electric shower trolley



6100 2500
Sirocco Basic shower stretcher
Wall-mounted



6100 2505
Sirocco Basic fixed height shower stretcher
Wall-mounted



6100 2510
Sirocco Deluxe shower stretcher
Wall-mounted



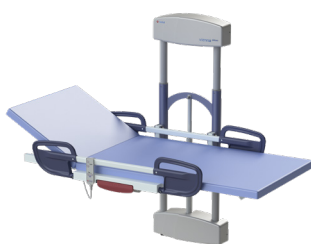
6100 3070
Stylex hydraulic shower trolley



6200 4015
Amfora hydraulic shower trolley



6500 4025
Vienna hydraulic
dressing table



6500 5030
Vienna Deluxe
wall-mounted dressing
table



6500 5035
Vienna Basic wall-mounted fixed
height dressing table

Product no.	Product description	Adjustable hydraulic / electric or fixed	Mobile	Height adjustable	Tilt mechanism	Adjustable backrest	Half central braking system	Vertical height adjustment	Extra external battery pack	Tech. lifespan min. 10 years*	Aluminum light weight	Wall mounted	Obesity
6100 2010	Marina Deluxe hydraulic shower trolley	hydraulic	•	•	•	•	•	•		•	•		•
6100 2060	Marina Deluxe electric shower trolley	electric	•	•	•	•	•	•	option	•	•		•
6100 2000	Marina Basic hydraulic shower trolley	hydraulic	•	•	•			•		•	•		•
6100 2050	Marina Basic electric shower trolley	electric	•	•	•			•	option	•	•		•
6100 2500	Sirocco Basic shower stretcher	electric		•				•	option	•		•	
6100 2505	Sirocco Basic fixed height shower stretcher									•		•	
6100 2510	Sirocco Deluxe shower stretcher	electric		•		•		•	option	•		•	
6100 3070	Stylex hydraulic shower trolley	hydraulic	•	•		•				•			
6200 4015	Amfora hydraulic shower trolley	hydraulic	•	•		•				•			
6500 4025	Vienna hydraulic dressing table	hydraulic	•	•		•				•	•		
6500 5030	Vienna Deluxe wall-mounted dressing table	electric		•		•		•	option	•	•	•	

For instruction and demonstration go to: www.lopital.com/videos

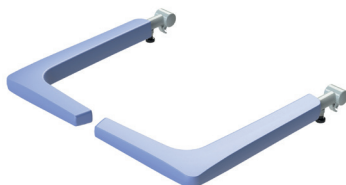
* Technical life span is only guaranteed with correct use and maintenance in accordance with the supplier's instructions.

Accessories for shower-toilet chairs

Product no.	Product description	Nemo	Flexo	Elexo	Elexo XXL	Reflex 5100 5600	Reflex 5100 5605	Mylo	Tango	Tango XL	Tango XXL
6840 5500	Headrest adjustable 5199/5500 excl. holder		•	•	•			•	•	•	•
6840 5661	Armrests with front dual locking set	•	•	•		•	•	•	•		
6975 8044	Seatbelt with plastic bukles for chair	•	•	•	•	•	•	•	•	•	•
6950 1104	Bedpan with lid plastic	•	•	•	•	•	•	•	•	•	•
6950 1110	Adapter plate for disposable bedpan	•	•	•	•	•	•	•	•	•	•
6950 5624	Platilon backrest for 5199/5500/5600/5100	•	•	•		•	•	•	•		
6950 5625	Platilon seat U-model 5199/5500/5600/5100	•	•	•		•	•	•	•		
6960 5198	Short footrest 5199/5500 5100 for 69605198	•	•	•	•		•				
6960 8026	Comfort leg support set removable and adjustable	•	•	•			•			•	
6975 8045	Seatbelt 4-point fastener for chair	•	•	•	•	•	•	•	•	•	•
7500 5693	Increase bush 30mm (all chairs except XL/XXL)	•	•	•		•	•	•	•	•	
6840 5678	Back cover + Wired hand control					•	•				



6840 5500 / 6840 5510
Headrest adjustable + holder



6840 5661
Armrests with front dual locking set



6975 8044
Seatbelt with plastic buckles for chair



6950 1104
Bedpan with lid plastic



6950 5624 / 6950 5625
Platilon backrest / Platilon seat U-model



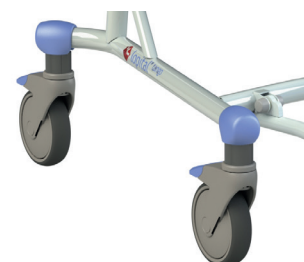
6950 1110
Adapter plate for disposable bedpan



6960 8026
Comfort leg support set removable and adjustable



6975 8045
Seatbelt 4-point fastener for chair



7500 5693
Increase bush 30mm

Make static load visible with the StatMeter

The **StatMeter** is a free online tool developed by **LOCOmotion** and **Lopital** that helps healthcare professionals gain insight into their own physical strain. By answering just a few questions, you will immediately receive practical tips and tools to prevent complaints.

- 💡 Individual or team-based completion
- 💡 Personal risk analysis and improvement ideas
- 💡 No storage of personal data

“You don’t feel it right away. It creeps up on you. Until it’s too late.” – Nico Knibbe, movement scientist at LOCOmotion



From insight to action – the 3x3 improvement plan

After completing the StatMeter, improvement ideas immediately arise. Each employee chooses three personal actions that he or she will focus on. The team then jointly determines three department-wide improvements. Together, these actions form **the 3x3 improvement plan**.



Getting started with healthy working practices in healthcare

Whether you are an ergonomic coach, team leader, or caregiver, StatMeter helps you start the conversation about healthier working. A small investment in time, a big impact on job satisfaction and employability.

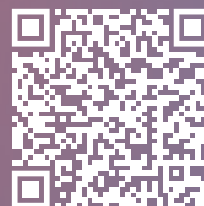
StatMeter



Get started today: www.stat-meter.com



Want to know more? Visit www.lopital.com or contact us.





	Class A	Class B	Class C	Class D	Class E
Flexo shower toilet chair	•	•	•	•	•
Elexo shower toilet chair	•	•	•	•	•
Elexo XXL shower toilet chair	•	•	•	•	•
Reflex 5600 shower toilet chair with height-adjustable footrest	•	•	•	•	•
Reflex 5605 shower toilet chair	•	•	•	•	•
Nemo shower toilet chair	•	•	•	•	
Tango shower toilet chair	•	•	•	•	
Tango XL shower toilet chair	•	•	•	•	
Tango XXL shower toilet chair	•	•	•	•	
Timo shower toilet chair	•	•	•	•	
Lotus active standup aid	•	•	•		
Lotus XL active standup aid	•	•	•		
Lotus Compact active standup aid	•	•	•		
Marina Basic hydraulic shower trolley				•	•
Marina Deluxe hydraulic shower trolley				•	•
Marina Basic electric shower trolley				•	•
Marina Deluxe electric shower trolley				•	•
Sirocco Basic shower stretcher				•	•
Sirocco Basic fixed height shower stretcher				•	•
Sirocco Deluxe shower stretcher				•	•
Amfora hydraulic shower trolley				•	•
Vienna hydraulic dressing table				•	•
Vienna Deluxe wall-mounted dressing table				•	•
Mobile lift Golvo 9000			•	•	•
Mobile lift Sabina			•	•	•
Mobile lift Viking M, L, XL			•	•	•
Overhead lift Luna			•	•	•
Overhead lift LikoRall 200			•	•	•
Overhead lift LikoRall 242 ES R2R			•	•	•
Overhead lift LikoRall 250 ES			•	•	•
Overhead lift Multirall 200			•	•	•
Overhead lift LikoGuard L – 272 kg			•	•	•
Overhead lift LikoGuard XL – 363 kg			•	•	•



For more information also visit our website: www.lopital.com
 Lopital Nederland B.V., Laarakkerweg 9, 5061 JR Oisterwijk
 Tel +31 (0)13 52.39.300, E-mail info@lopital.nl, www.lopital.nl

Copyright © 2025 Lopital. All rights reserved.



ISO CERTIFIED
 9001 – 13485 – 14001

MADE IN
 THE NETHERLANDS



Scan for
 information