



## Cleaning and disinfection protocol

Shower(-toilet) chairs  
Shower trolleys  
Dressing tables  
Rising aids

## Table of Contents

Introduction .....	2
Applying Common Cleaning/disinfectants to Lopital Products.....	3
Recommendations for cleaning and disinfection .....	4
Instructions by product.....	5
Nemo - Shower-toilet Chair .....	5
Flexo - Shower-toilet chair.....	7
Elexo - Shower-toilet chair .....	9
Elexo XXL - Shower-toilet chair.....	11
Reflex - Shower-toilet chair .....	13
Tango - Shower-toilet chair .....	15
Mylo - Shower-toilet chair .....	17
Tango XL - Shower-toilet chair .....	19
Tango XXL - Shower-toilet chair .....	21
Timo - Shower(-toilet) chair .....	23
Cleo - Shower(-toilet) chair .....	25
Marina basic & Marina deluxe - Shower trolley.....	27
Marina - Shower trolley .....	29
Sirocco - Wall-Mounted shower trolley.....	31
Amfora - Wall-mounted Shower trolley.....	31
Vienna - Wall-mounted dressing table .....	31
Stylex - Shower trolley.....	33
Amfora - Shower trolley .....	33
Vienna - Dressing table.....	33
Luxal - Shower trolley .....	35
Lotus - Rising aid .....	37

### Manufacturer

Lopital Nederland B.V.  
Laarakkerweg 9  
5061 JR Oisterwijk  
The Netherlands  
T +31 (0) 13 5239300  
[www.lopital.com](http://www.lopital.com)  
[info@lopital.nl](mailto:info@lopital.nl)

All of the aids produced by Lopital fulfil the following norms: MDR (EU) 2017/745, NEN-EN-ISO 14971, NEN-EN 12182, ISO17966, IEC60529, IEC60601-1, IEC60601-1-2, IEC60601-1-6, IEC62366, CAN/CSA-C22.2 60601-1, ANSI/AAMI ES60601-1, UNI-CEI-EN-ISO 13485, NEN-EN-ISO 9001, NEN-EN-ISO 14001

## Introduction

These instructions apply to all Lopital shower-toilet chairs, shower trolleys, dressing tables and rising aids.

Cleaning and disinfection of Lopital products is necessary to prevent any sources of contamination remaining on the product from being transferred. Products should therefore be cleaned and disinfected after use.

To maintain the warranty and expected life, it is important to follow the recommendations in this protocol. This protocol describes detailed cleaning and disinfection procedures for Lopital products. The instructions in this protocol do not replace the cleaning and disinfection policy of your institution.

This protocol is only intended for persons who use Lopital products or who take care of cleaning, disinfection and maintenance of the products. Failure to follow these instructions can lead to serious damage to the products and/or invisible defects.

Lopital recommends cleaning and disinfecting the products before first use.

Lopital recommends cleaning and disinfecting the products when they are disposed of as waste. All parts that are replaced or removed can be returned to Lopital. It is also possible to offer these parts to the technician for destruction. We will ensure that all parts are processed in an environmentally friendly manner.

Lopital products are constantly undergoing further development. We therefore reserve the right to change products without prior notice. Lopital only offers express written warranty on the sale of products.

Information in this protocol is subject to change without notice. Please visit our website for the most current version of this protocol or contact your Lopital account manager for advice and further information.

### Safety advice

- When cleaning, wear appropriate protective equipment according to the manufacturer's instructions and your institution's protocols, such as: rubber gloves, goggles, apron, face mask, and shoe protection.
- Before cleaning and disinfecting, unplug the product if applicable.
- Never clean the electric and hydraulic powered products by pouring water on them.
- Never use a steam cleaner for cleaning.
- Read the manufacturer's recommendations for cleaning and disinfecting the products.



**Insufficient cleaning and disinfection increases the risk of cross-contamination!**

### Applying Common Cleaning/disinfectants to Lopital Products

Chemical class	Active component	pH	Cleaning agents/Disinfectants*	Manufacturer	Must not be used on the following parts:
Quaternary ammonium chloride	Didecyl dimethylammoniumchloride = 8.704% Alkyldimethylbenzylammoniumchloride = 8.19%	9.0-10.0 during use	Virex II (256)	Johnson/Diversey	Foot board of the Lotus rising aid and stretcher board of the Marina/Luxal/ Sirocco shower trolley
Quaternary ammonium chloride	Alkyldimethylbenzylammoniumchloride = 13.238% Alkyldimethylbenzylammoniumchloride = 13.238%	9.5 during use	HB Quat 25L	3M	
Accelerated hydrogen peroxide	Hydrogen peroxide 0.1-1.5% Benzyl Alcohol: 1-5% Hydrogen peroxide 0.1-1.5% Benzyl Alcohol: 1-5%	3	Oxvie Tb	Johnson/Diversey	Calf straps of shower-toilet chairs.
Phenolic	Orthophenylphenol = 3.40% Orthobenzyl parachlorophenol = 3.03	3.1 +/- 0.4 during use	Wexcide	Wexford Labs	
Chlorine	Sodium hypochlorite max. 1000 ppm	12.2	Dispatch	Caltech	Calf straps of shower-toilet chairs.
Alcohol	Isopropyl alcohol = 70%	5.0-7.0	Viraguard	Veridien	Hand controls of all products if applicable
Benzyl-C12-18-alkyldimethylamm onium chlorides	Benzyl-C12-18-alkyldimethylammonium chlorides (22%) 2-phenoxyethanol (20%) Tridecyl polyethylenglycol ether (15%) Propan-2-ol (8%)	approx. 8.6 during use	Terralin Protect	Shülke	Foot board of the Lotus rising aid and stretcher board of the Marina/Luxal/Sirocco shower trolley
Organic peroxide (type E, solid)	Magnesium monoperoxifalate hexahydrate (50-100%) Anionic surfactant (5-10%) Nonionic surfactant (1-10%)	5.3 during use	Dismozone plus	Bode	Calf straps of shower-toilet chairs
Ethanol	Hydrogen peroxide (2.5-10%) Lauryldimethylamine oxide (0-2.5%) Ethanol (2.5-10%)	7	Anioxy Spray WS	Anios	Control box of the Luxal, Marina, Sirocco, Amfora, Vienna
Troclosene sodium	Adipic acid 10-30% Amorphous silicon < 1% Sodium toluenesulphonate 5-10% Troclosene sodium 10-30%	4-6 during use	Chlor-Clean	Guest Medical Ltd	Calf straps of shower-toilet chairs

## Recommendations for cleaning and disinfection

To avoid the risk of contamination, all parts must be cleaned and disinfected after use.

All necessary precautions should be taken to remove all stains and dirt.

The cleaning and disinfection method described on the following pages applies specifically to Lopital products and accessories. This method is designed to save time and prevent infections more efficiently.

### Equipment:

- When cleaning, wear appropriate protective equipment (such as rubber gloves, goggles, apron, face mask, and shoe protection) according to the manufacturer's instructions and your institution's protocols.
- Clean buckets
- Cleaning cloths for cleaning and drying
- Soft brush
- Warm water
- To find cleaning/disinfecting agents that may or may not be compatible with Lopital products, follow the instructions in "Applying Common Cleaning/Disinfectants to Lopital Products" on page 3 of this document.

## Instructions by product

### Nemo - Shower-toilet Chair

51005100

The Nemo must be cleaned after every use, with water and regular household cleaning agents. PUR integrated foam components with IMC coating should be rubbed clean and disinfected. Do not use any abrasive or other aggressive cleaning products. If necessary, the PUR components can be disinfected with a solution of 70% ethanol or propanol.

The time the products must be left on the components has a significant impact upon the lifespan of the PUR components. As a result of the material properties of PUR, contact with sharp objects must be avoided. This could lead to damage or tears in the material. Finally, we would like to point out that non-critical parts of the PUR components must also be cleaned and disinfected.

Check the wheels regularly for hairs, dust and soap residues and remove when necessary. Maintenance and repairs to the Nemo may only be carried out by authorised personnel.

Maintenance schedule	
After every use	<ul style="list-style-type: none"><li>• Clean chair with water and regular household cleaning products (see next page).</li><li>• PUR foam components must be cleaned and disinfected.</li><li>• Check to ensure all parts of the Nemo are present, including the footrests, the head support and the seat filler piece.</li></ul>
Weekly	<ul style="list-style-type: none"><li>• Check wheels for hairs, dust and soap residues and remove if necessary.</li><li>• Check that the chair is still working correctly.</li></ul>
Annually	<ul style="list-style-type: none"><li>• According to the medical devices regulation MDR (EU) 2017/745 a chair must be maintained in line with manufacturer's instructions.</li></ul>

## Cleaning protocol

### Cleaning

1. Clean the seat with a damp cloth with warm water and an institution-approved neutral detergent. A soft brush can be used to remove stains and stubborn dirt.
2. Wipe the entire chair from top to bottom. Do not use a dripping wet cloth. For easy access to all parts of the seat, adjust the seat to both the upright and reclined position.
3. Pay extra attention to the following surfaces:
  - Backrest
  - Seat (also underside)
  - Seat cover
  - Headrest
  - Calf support
  - Footrests
  - Armrests
  - Handles
  - Bedpan guides
  - Wheels



You can also use a cleaning unit/cleaning system to clean your chair. The temperature in the system should be a maximum of 55°C.

### Disinfecting

4. Repeat the cleaning protocol - Cleaning after reading "Application of common cleaning/disinfectants to Lopital products" on page 3 of this document. Follow the manufacturer's directions for proper use of the disinfectant.
5. After disinfecting the chair, wipe the chair with a damp cloth and clean water to remove any residue from the disinfectant.

### **The bedpan should be cleaned and disinfected in a bedpan washer after use.**

The bedpan washers/disinfectors are highly suitable for proper cleaning and disinfection of the bedpan. Bedpan washers/disinfectors have been developed to prevent the spread of pathogens, thus protecting not only patients or clients, but also staff. For example, in addition to cleaning, the machines perform a thermal disinfection in accordance with current guidelines and recommendations. This guarantees the highest hygiene standards.


## Flexo - Shower-toilet chair

51005199

The Flexo must be cleaned after every use, with water and regular household cleaning agents. PUR integrated foam components with IMC coating should be rubbed clean and disinfected. Do not use any abrasive or other aggressive cleaning products. If necessary, the PUR components can be disinfected with a solution of 70% ethanol or propanol.

The time the products must be left on the components has a significant impact upon the lifespan of the PUR components. As a result of the material properties of PUR, contact with sharp objects must be avoided. This could lead to damage or tears in the material. Finally, we would like to point out that non-critical parts of the PUR components must also be cleaned and disinfected.

Check the wheels regularly for hairs, dust and soap residues and remove when necessary. Maintenance and repairs to the Flexo may only be carried out by authorised personnel.

Maintenance schedule	
After every use	<ul style="list-style-type: none"> <li>• Clean chair with water and regular household cleaning products (see next page).</li> <li>• PUR foam components must be cleaned and disinfected.</li> <li>• Check to ensure all parts of the Flexo are present, including the footrests and the seat filler piece.</li> </ul>
Weekly	<ul style="list-style-type: none"> <li>• Check wheels for hairs, dust and soap residues and remove if necessary.</li> <li>• Check that the chair is still working correctly.</li> </ul>
Annually  	<ul style="list-style-type: none"> <li>• According to the medical devices regulation MDR (EU) 2017/745 a chair must be maintained in line with manufacturer's instructions. This process will preferably be carried out by Lopital or another authorised body. Lopital offers the option of having the chair thoroughly inspected and serviced once a year via Periodic Preventative Maintenance.</li> </ul> <p>For more information about the maintenance contract, please contact Lopital (info@lopital.nl) or speak to your supplier.</p>



## Cleaning protocol

### Cleaning

1. Clean the seat with a damp cloth with warm water and an institution-approved neutral detergent. A soft brush can be used to remove stains and stubborn dirt.
2. Wipe the entire chair from top to bottom. Do not use a dripping wet cloth. For easy access to all parts of the seat, adjust the seat to both the upright and reclined position.
3. Pay extra attention to the following surfaces:
  - Backrest
  - Seat (also underside)
  - Seat cover
  - Calf support
  - Footrests
  - Armrests
  - Handles
  - Bedpan guides
  - Wheels



You can also use a cleaning unit/cleaning system to clean your chair. The temperature in the system should be a maximum of 55°C.

### Disinfecting

4. Repeat the cleaning protocol - Cleaning after reading "Application of common cleaning/disinfectants to Lopital products" on page 3 of this document. Follow the manufacturer's directions for proper use of the disinfectant.
5. After disinfecting the chair, wipe the chair with a damp cloth and clean water to remove any residue from the disinfectant.

**The bedpan should be cleaned and disinfected in a bedpan washer after use.**

The bedpan washers/disinfectors are highly suitable for proper cleaning and disinfection of the bedpan. Bedpan washers/disinfectors have been developed to prevent the spread of pathogens, thus protecting not only patients or clients, but also staff. For example, in addition to cleaning, the machines perform a thermal disinfection in accordance with current guidelines and recommendations. This guarantees the highest hygiene standards.


## Elexo – Shower-toilet chair

51005500

The Elexo must be cleaned after every use, with water and regular household cleaning agents. PUR integrated foam components with IMC coating should be rubbed clean and disinfected. Do not use any abrasive or other aggressive cleaning products. If necessary, the PUR components can be disinfected with a solution of 70% ethanol or propanol.

The time the products must be left on the components has a significant impact upon the lifespan of the PUR components. As a result of the material properties of PUR, contact with sharp objects must be avoided. This could lead to damage or tears in the material. Finally, we would like to point out that non-critical parts of the PUR components must also be cleaned and disinfected.

Check the wheels regularly for hairs, dust and soap residues and remove when necessary. Maintenance and repairs to the Elexo may only be carried out by authorised personnel.

Maintenance schedule	
After every use	<ul style="list-style-type: none"> <li>• Clean chair with water and regular household cleaning products (see next page).</li> <li>• PUR foam components must be cleaned and disinfected.</li> <li>• Check to ensure all parts of the Elexo are present, including the footrests, the seat filler piece and the manual control.</li> </ul>
Weekly	<ul style="list-style-type: none"> <li>• Check wheels for hairs, dust and soap residues and remove if necessary.</li> <li>• Check that the chair is still working correctly.</li> <li>• Charge the battery at least once a week.</li> </ul>
Annually  	<ul style="list-style-type: none"> <li>• According to the medical devices regulation MDR (EU) 2017/745 a chair must be maintained in line with manufacturer's instructions. This process will preferably be carried out by Lopital or another authorised body. Lopital offers the option of having the chair thoroughly inspected and serviced once a year via Periodic Preventative Maintenance.</li> </ul> <p>For more information about the maintenance contract, please contact Lopital (info@lopital.nl) or speak to your supplier.</p>

## Cleaning protocol

1. Before cleaning and disinfecting, unplug the product if applicable.

### Cleaning

2. Clean the seat with a damp cloth with warm water and an institution-approved neutral detergent. A soft brush can be used to remove stains and stubborn dirt.
3. Wipe the entire chair from top to bottom. Do not use a dripping wet cloth. For easy access to all parts of the seat, adjust the seat to both the upright and reclined position.
4. Pay extra attention to the following surfaces:
  - Backrest
  - Seat (also underside)
  - Seat cover
  - Calf support
  - Footrests
  - Armrests
  - Handles
  - Bedpan guides
  - Wheels



You can also use a cleaning unit/cleaning system to clean your chair. The temperature in the system should be a maximum of 55°C.

### Disinfecting

5. Repeat the cleaning protocol - Cleaning after reading "Application of common cleaning/disinfectants to Lopital products" on page 3 of this document. Follow the manufacturer's directions for proper use of the disinfectant.
6. After disinfecting the chair, wipe the chair with a damp cloth and clean water to remove any residue from the disinfectant.

**The bedpan should be cleaned and disinfected in a bedpan washer after use.**

The bedpan washers/disinfectors are highly suitable for proper cleaning and disinfection of the bedpan. Bedpan washers/disinfectors have been developed to prevent the spread of pathogens, thus protecting not only patients or clients, but also staff. For example, in addition to cleaning, the machines perform a thermal disinfection in accordance with current guidelines and recommendations. This guarantees the highest hygiene standards.


## Elexo XXL - Shower-toilet chair

51005300

The Elexo XXL must be cleaned after every use, with water and regular household cleaning agents. PUR integrated foam components with IMC coating should be rubbed clean and disinfected. Do not use any abrasive or other aggressive cleaning products. If necessary, the PUR components can be disinfected with a solution of 70% ethanol or propanol.

The time the products must be left on the components has a significant impact upon the lifespan of the PUR components. As a result of the material properties of PUR, contact with sharp objects must be avoided. This could lead to damage or tears in the material. Finally, we would like to point out that non-critical parts of the PUR components must also be cleaned and disinfected.

Check the wheels regularly for hairs, dust and soap residues and remove when necessary. Maintenance and repairs to the Elexo XXL may only be carried out by authorised personnel.

Maintenance schedule	
After every use	<ul style="list-style-type: none"> <li>• Clean chair with water and regular household cleaning products (see next page).</li> <li>• PUR foam components must be cleaned and disinfected.</li> <li>• Check to ensure all parts of the Elexo XXL are present, including the footrests, the seat filler piece and the manual control.</li> </ul>
Weekly	<ul style="list-style-type: none"> <li>• Check wheels for hairs, dust and soap residues and remove if necessary.</li> <li>• Check that the chair is still working correctly.</li> <li>• Charge the battery at least once a week.</li> </ul>
Annually  	<ul style="list-style-type: none"> <li>• According to the medical devices regulation MDR (EU) 2017/745 a chair must be maintained in line with manufacturer's instructions. This process will preferably be carried out by Lopital or another authorised body. Lopital offers the option of having the chair thoroughly inspected and serviced once a year via Periodic Preventative Maintenance.</li> </ul> <p>For more information about the maintenance contract, please contact Lopital (info@lopital.nl) or speak to your supplier.</p>

## **Cleaning protocol**

1. Before cleaning and disinfecting, unplug the product if applicable.

### Cleaning

2. Clean the seat with a damp cloth with warm water and an institution-approved neutral detergent. A soft brush can be used to remove stains and stubborn dirt.
3. Wipe the entire chair from top to bottom. Do not use a dripping wet cloth. For easy access to all parts of the seat, adjust the seat to both the upright and reclined position.
4. Pay extra attention to the following surfaces:
  - Backrest
  - Seat (also underside)
  - Calf support
  - Footrests
  - Armrests
  - Handles
  - Bedpan guides
  - Wheels



You can also use a cleaning unit/cleaning system to clean your chair. The temperature in the system should be a maximum of 55°C.

### Disinfecting

5. Repeat the cleaning protocol - Cleaning after reading "Application of common cleaning/disinfectants to Lopital products" on page 3 of this document. Follow the manufacturer's directions for proper use of the disinfectant.
6. After disinfecting the chair, wipe the chair with a damp cloth and clean water to remove any residue from the disinfectant.

**The bedpan should be cleaned and disinfected in a bedpan washer after use.**

The bedpan washers/disinfectors are highly suitable for proper cleaning and disinfection of the bedpan. Bedpan washers/disinfectors have been developed to prevent the spread of pathogens, thus protecting not only patients or clients, but also staff. For example, in addition to cleaning, the machines perform a thermal disinfection in accordance with current guidelines and recommendations. This guarantees the highest hygiene standards.


## Reflex – Shower-toilet chair

51005600, 51005605

The Reflex must be cleaned after every use, with water and regular household cleaning agents. PUR integrated foam components with IMC coating should be rubbed clean and disinfected. Do not use any abrasive or other aggressive cleaning products. If necessary, the PUR components can be disinfected with a solution of 70% ethanol or propanol.

The time the products must be left on the components has a significant impact upon the lifespan of the PUR components. As a result of the material properties of PUR, contact with sharp objects must be avoided. This could lead to damage or tears in the material. Finally, we would like to point out that non-critical parts of the PUR components must also be cleaned and disinfected.

Check the wheels regularly for hairs, dust and soap residues and remove when necessary. Maintenance and repairs to the Reflex may only be carried out by authorised personnel.

Maintenance schedule	
After every use	<ul style="list-style-type: none"> <li>• Clean chair with water and regular household cleaning products (see next page).</li> <li>• PUR foam components must be cleaned and disinfected.</li> <li>• Check to ensure all parts of the Reflex are present, including the footrests, the headrest, the seat filler piece and the manual control.</li> </ul>
Weekly	<ul style="list-style-type: none"> <li>• Check wheels for hairs, dust and soap residues and remove if necessary.</li> <li>• Check that the chair is still working correctly.</li> <li>• Charge the battery at least once a week.</li> </ul>
Annually  	<ul style="list-style-type: none"> <li>• According to the medical devices regulation MDR (EU) 2017/745 a chair must be maintained in line with manufacturer's instructions. This process will preferably be carried out by Lopital or another authorised body. Lopital offers the option of having the chair thoroughly inspected and serviced once a year via Periodic Preventative Maintenance.</li> </ul> <p>For more information about the maintenance contract, please contact Lopital (info@lopital.nl) or speak to your supplier.</p>

## Cleaning protocol

1. Before cleaning and disinfecting, unplug the product if applicable.

### Cleaning

2. Clean the seat with a damp cloth with warm water and an institution-approved neutral detergent. A soft brush can be used to remove stains and stubborn dirt.
3. Wipe the entire chair from top to bottom. Do not use a dripping wet cloth. For easy access to all parts of the seat, adjust the seat to both the upright and reclined position.
4. Pay extra attention to the following surfaces:
  - Backrest
  - Seat (also underside)
  - Seat cover
  - Headrest
  - Calf support
  - Footrests
  - Armrests
  - Handles
  - Manual control (option) or control panel on the back canopy
  - On/off switch
  - Bedpan guides
  - Wheels



You can also use a cleaning unit/cleaning system to clean your chair. The temperature in the system should be a maximum of 55°C.

### Disinfecting

5. Repeat the cleaning protocol - Cleaning after reading "Applying common cleaning/disinfectants to Lopital products" on page 3 of this document. Follow the manufacturer's directions for proper use of the disinfectant.
6. After disinfecting the chair, wipe the chair with a damp cloth and clean water to remove any residue from the disinfectant.

**The bedpan should be cleaned and disinfected in a bedpan washer after use.**

The bedpan washers/disinfectors are highly suitable for proper cleaning and disinfection of the bedpan. Bedpan washers/disinfectors have been developed to prevent the spread of pathogens, thus protecting not only patients or clients, but also staff. For example, in addition to cleaning, the machines perform a thermal disinfection in accordance with current guidelines and recommendations. This guarantees the highest hygiene standards.

## Tango – Shower-toilet chair

51005700

The Tango must be cleaned after every use, with water and regular household cleaning agents. PUR integrated foam components with IMC coating should be rubbed clean and disinfected. Do not use any abrasive or other aggressive cleaning products. If necessary, the PUR components can be disinfected with a solution of 70% ethanol or propanol.

The time the products must be left on the components has a significant impact upon the lifespan of the PUR components. As a result of the material properties of PUR, contact with sharp objects must be avoided. This could lead to damage or tears in the material. Finally, we would like to point out that non-critical parts of the PUR components must also be cleaned and disinfected.

Check the wheels regularly for hairs, dust and soap residues and remove when necessary. Maintenance and repairs to the Tango may only be carried out by authorised personnel.

Maintenance schedule	
After every use	<ul style="list-style-type: none"><li>• Clean chair with water and regular household cleaning products (see next page).</li><li>• PUR foam components must be cleaned and disinfected.</li><li>• Check to ensure all parts of the Tango are present, including the footrests and the seat filler piece.</li></ul>
Weekly	<ul style="list-style-type: none"><li>• Check wheels for hairs, dust and soap residues and remove if necessary.</li><li>• Check that the chair is still working correctly.</li></ul>
Annually	<ul style="list-style-type: none"><li>• According to the medical devices regulation MDR (EU) 2017/745 a chair must be maintained in line with manufacturer's instructions.</li></ul>



## Cleaning protocol

### Cleaning

1. Clean the seat with a damp cloth with warm water and an institution-approved neutral detergent. A soft brush can be used to remove stains and stubborn dirt.
2. Wipe the entire chair from top to bottom. Do not use a dripping wet cloth.
3. Pay extra attention to the following surfaces:
  - Backrest
  - Seat (also underside)
  - Seat cover
  - Footrests
  - Armrests
  - Handles
  - Bedpan guides
  - Wheels



You can also use a cleaning unit/cleaning system to clean your chair. The temperature in the system should be a maximum of 55°C.

### Disinfecting

4. Repeat the cleaning protocol - Cleaning after reading "Applying common cleaning/disinfectants to Lopital products" on page 3 of this document. Follow the manufacturer's directions for proper use of the disinfectant.
5. After disinfecting the chair, wipe the chair with a damp cloth and clean water to remove any residue from the disinfectant.

**The bedpan should be cleaned and disinfected in a bedpan washer after use.**

The bedpan washers/disinfectors are highly suitable for proper cleaning and disinfection of the bedpan. Bedpan washers/disinfectors have been developed to prevent the spread of pathogens, thus protecting not only patients or clients, but also staff. For example, in addition to cleaning, the machines perform a thermal disinfection in accordance with current guidelines and recommendations. This guarantees the highest hygiene standards.

## Mylo - Shower-toilet chair

51005701

The Mylo must be cleaned after every use, with water and regular household cleaning agents. PUR integrated foam components with IMC coating should be rubbed clean and disinfected. Do not use any abrasive or other aggressive cleaning products. If necessary, the PUR components can be disinfected with a solution of 70% ethanol or propanol.

The time the products must be left on the components has a significant impact upon the lifespan of the PUR components. As a result of the material properties of PUR, contact with sharp objects must be avoided. This could lead to damage or tears in the material. Finally, we would like to point out that non-critical parts of the PUR components must also be cleaned and disinfected.

Check the wheels regularly for hairs, dust and soap residues and remove when necessary. Maintenance and repairs to the Mylo may only be carried out by authorised personnel.

Maintenance schedule	
After every use	<ul style="list-style-type: none"><li>• Clean chair with water and regular household cleaning products (see next page).</li><li>• PUR foam components must be cleaned and disinfected.</li><li>• Check to ensure all parts of the Mylo are present, including the removable seat.</li></ul>
Weekly	<ul style="list-style-type: none"><li>• Check wheels for hairs, dust and soap residues and remove if necessary.</li><li>• Check that the chair is still working correctly.</li></ul>
Annually	<ul style="list-style-type: none"><li>• According to the medical devices regulation MDR (EU) 2017/745 a chair must be maintained in line with manufacturer's instructions.</li></ul>

## Cleaning protocol

### Cleaning

1. Clean the seat with a damp cloth with warm water and an institution-approved neutral detergent. A soft brush can be used to remove stains and stubborn dirt.
2. Wipe the entire chair from top to bottom. Do not use a dripping wet cloth.
3. Pay extra attention to the following surfaces:
  - Backrest
  - Seat (also underside, the seat is easily foldable and removable)
  - Footrests
  - Armrests
  - Handles
  - Bedpan guides
  - Wheels



You can also use a cleaning unit/cleaning system to clean your chair. The temperature in the system should be a maximum of 55°C.

### Disinfecting

4. Repeat the cleaning protocol - Cleaning after reading “Applying common cleaning/disinfectants to Lopital products” on page 3 of this document. Follow the manufacturer's directions for proper use of the disinfectant.
5. After disinfecting the chair, wipe the chair with a damp cloth and clean water to remove any residue from the disinfectant.

**The bedpan should be cleaned and disinfected in a bedpan washer after use.**

The bedpan washers/disinfectors are highly suitable for proper cleaning and disinfection of the bedpan. Bedpan washers/disinfectors have been developed to prevent the spread of pathogens, thus protecting not only patients or clients, but also staff. For example, in addition to cleaning, the machines perform a thermal disinfection in accordance with current guidelines and recommendations. This guarantees the highest hygiene standards.

## Tango XL – Shower-toilet chair

51005705

The Tango XL must be cleaned after every use, with water and regular household cleaning agents. PUR integrated foam components with IMC coating should be rubbed clean and disinfected. Do not use any abrasive or other aggressive cleaning products. If necessary, the PUR components can be disinfected with a solution of 70% ethanol or propanol.

The time the products must be left on the components has a significant impact upon the lifespan of the PUR components. As a result of the material properties of PUR, contact with sharp objects must be avoided. This could lead to damage or tears in the material. Finally, we would like to point out that non-critical parts of the PUR components must also be cleaned and disinfected.

Check the wheels regularly for hairs, dust and soap residues and remove when necessary. Maintenance and repairs to the Tango XL may only be carried out by authorised personnel.

Maintenance schedule	
After every use	<ul style="list-style-type: none"><li>• Clean chair with water and regular household cleaning products (see next page).</li><li>• PUR foam components must be cleaned and disinfected.</li><li>• Check to ensure all parts of the Tango XL are present, including the footrests.</li></ul>
Weekly	<ul style="list-style-type: none"><li>• Check wheels for hairs, dust and soap residues and remove if necessary.</li><li>• Check that the chair is still working correctly.</li></ul>
Annually	<ul style="list-style-type: none"><li>• According to the medical devices regulation MDR (EU) 2017/745 a chair must be maintained in line with manufacturer's instructions.</li></ul>

## Cleaning protocol

### Cleaning

1. Clean the seat with a damp cloth with warm water and an institution-approved neutral detergent. A soft brush can be used to remove stains and stubborn dirt.
2. Wipe the entire chair from top to bottom. Do not use a dripping wet cloth.
3. Pay extra attention to the following surfaces:
  - Backrest
  - Seat (also underside)
  - Footrests
  - Armrests
  - Handles
  - Bedpan guides
  - Wheels



You can also use a cleaning unit/cleaning system to clean your chair. The temperature in the system should be a maximum of 55°C.

### Disinfecting

4. Repeat the cleaning protocol - Cleaning after reading "Applying common cleaning/disinfectants to Lopital products" on page 3 of this document. Follow the manufacturer's directions for proper use of the disinfectant.
5. After disinfecting the chair, wipe the chair with a damp cloth and clean water to remove any residue from the disinfectant.

**The bedpan should be cleaned and disinfected in a bedpan washer after use.**

The bedpan washers/disinfectors are highly suitable for proper cleaning and disinfection of the bedpan. Bedpan washers/disinfectors have been developed to prevent the spread of pathogens, thus protecting not only patients or clients, but also staff. For example, in addition to cleaning, the machines perform a thermal disinfection in accordance with current guidelines and recommendations. This guarantees the highest hygiene standards.

## Tango XXL – Shower-toilet chair

51005800

The Tango XXL must be cleaned after every use, with water and regular household cleaning agents. PUR integrated foam components with IMC coating should be rubbed clean and disinfected. Do not use any abrasive or other aggressive cleaning products. If necessary, the PUR components can be disinfected with a solution of 70% ethanol or propanol.

The time the products must be left on the components has a significant impact upon the lifespan of the PUR components. As a result of the material properties of PUR, contact with sharp objects must be avoided. This could lead to damage or tears in the material. Finally, we would like to point out that non-critical parts of the PUR components must also be cleaned and disinfected.

Check the wheels regularly for hairs, dust and soap residues and remove when necessary. Maintenance and repairs to the Tango XXL may only be carried out by authorised personnel.

Maintenance schedule	
After every use	<ul style="list-style-type: none"><li>• Clean chair with water and regular household cleaning products (see next page).</li><li>• PUR foam components must be cleaned and disinfected.</li><li>• Check to ensure all parts of the Tango XXL are present, including the footrests.</li></ul>
Weekly	<ul style="list-style-type: none"><li>• Check wheels for hairs, dust and soap residues and remove if necessary.</li><li>• Check that the chair is still working correctly.</li></ul>
Annually	<ul style="list-style-type: none"><li>• According to the medical devices regulation MDR (EU) 2017/745 a chair must be maintained in line with manufacturer's instructions.</li></ul>

## Cleaning protocol

### Cleaning

1. Clean the seat with a damp cloth with warm water and an institution-approved neutral detergent. A soft brush can be used to remove stains and stubborn dirt.
2. Wipe the entire chair from top to bottom. Do not use a dripping wet cloth.
3. Pay extra attention to the following surfaces:
  - Backrest
  - Seat (also underside)
  - Footrests
  - Armrests
  - Handles
  - Bedpan guides
  - Wheels



You can also use a cleaning unit/cleaning system to clean your chair. The temperature in the system should be a maximum of 55°C.

### Disinfecting

4. Repeat the cleaning protocol - Cleaning after reading "Applying common cleaning/disinfectants to Lopital products" on page 3 of this document. Follow the manufacturer's directions for proper use of the disinfectant.
5. After disinfecting the chair, wipe the chair with a damp cloth and clean water to remove any residue from the disinfectant.

**The bedpan should be cleaned and disinfected in a bedpan washer after use.**

The bedpan washers/disinfectors are highly suitable for proper cleaning and disinfection of the bedpan. Bedpan washers/disinfectors have been developed to prevent the spread of pathogens, thus protecting not only patients or clients, but also staff. For example, in addition to cleaning, the machines perform a thermal disinfection in accordance with current guidelines and recommendations. This guarantees the highest hygiene standards.

### **Timo – Shower(-toilet) chair**

*54006020, 54006021, 54006024, 54006030, 54006034, 54006035*

The Timo must be cleaned after every use, with water and regular household cleaning agents. PUR integrated foam components with IMC coating should be rubbed clean and disinfected. Do not use any abrasive or other aggressive cleaning products. If necessary, the PUR components can be disinfected with a solution of 70% ethanol or propanol.

The time the products must be left on the components has a significant impact upon the lifespan of the PUR components. As a result of the material properties of PUR, contact with sharp objects must be avoided. This could lead to damage or tears in the material. Finally, we would like to point out that non-critical parts of the PUR components must also be cleaned and disinfected.

Check the wheels regularly for hairs, dust and soap residues and remove when necessary. Maintenance and repairs to the Timo may only be carried out by authorised personnel.

<b>Maintenance schedule</b>	
After every use	<ul style="list-style-type: none"><li>• Clean chair with water and regular household cleaning products (see next page).</li><li>• PUR foam components must be cleaned and disinfected.</li><li>• Check to ensure all parts of the Timo are present, including the footrests and removable seat.</li></ul>
Weekly	<ul style="list-style-type: none"><li>• Check wheels for hairs, dust and soap residues and remove if necessary.</li><li>• Check that the chair is still working correctly.</li></ul>
Annually	<ul style="list-style-type: none"><li>• According to the medical devices regulation MDR (EU) 2017/745 a chair must be maintained in line with manufacturer's instructions.</li></ul>



## Cleaning protocol

### Cleaning

1. Clean the seat with a damp cloth with warm water and an institution-approved neutral detergent. A soft brush can be used to remove stains and stubborn dirt.
2. Wipe the entire chair from top to bottom. Do not use a dripping wet cloth.
3. Pay extra attention to the following surfaces:
  - Backrest
  - Seat (also underside, the seat is removable)
  - Footrests
  - Armrests
  - Handles
  - Bedpan guides
  - Wheels



You can also use a cleaning unit/cleaning system to clean your chair. The temperature in the system should be a maximum of 55°C.

### Disinfecting

4. Repeat the cleaning protocol - Cleaning after reading "Applying common cleaning/disinfectants to Lopital products" on page 3 of this document. Follow the manufacturer's directions for proper use of the disinfectant.
5. After disinfecting the chair, wipe the chair with a damp cloth and clean water to remove any residue from the disinfectant.

**The bedpan should be cleaned and disinfected in a bedpan washer after use.**

The bedpan washers/disinfectors are highly suitable for proper cleaning and disinfection of the bedpan. Bedpan washers/disinfectors have been developed to prevent the spread of pathogens, thus protecting not only patients or clients, but also staff. For example, in addition to cleaning, the machines perform a thermal disinfection in accordance with current guidelines and recommendations. This guarantees the highest hygiene standards.

## Cleo – Shower(-toilet) chair

54006040, 54006050

The Cleo must be cleaned after every use, with water and regular household cleaning agents. PUR integrated foam components with IMC coating should be rubbed clean and disinfected. Do not use any abrasive or other aggressive cleaning products. If necessary, the PUR components can be disinfected with a solution of 70% ethanol or propanol.

The time the products must be left on the components has a significant impact upon the lifespan of the PUR components. As a result of the material properties of PUR, contact with sharp objects must be avoided. This could lead to damage or tears in the material. Finally, we would like to point out that non-critical parts of the PUR components must also be cleaned and disinfected.

Check the wheels regularly for hairs, dust and soap residues and remove when necessary. Maintenance and repairs to the Cleo may only be carried out by authorised personnel.

Maintenance schedule	
After every use	<ul style="list-style-type: none"><li>• Clean chair with water and regular household cleaning products (see next page).</li><li>• PUR foam components must be cleaned and disinfected.</li><li>• Check to ensure all parts of the Cleo are present, including the footrests and removable seat.</li></ul>
Weekly	<ul style="list-style-type: none"><li>• Check wheels for hairs, dust and soap residues and remove if necessary.</li><li>• Check that the chair is still working correctly.</li></ul>
Annually	<ul style="list-style-type: none"><li>• According to the medical devices regulation MDR (EU) 2017/745 a chair must be maintained in line with manufacturer's instructions.</li></ul>

## Cleaning protocol

### Cleaning

1. Clean the seat with a damp cloth with warm water and an institution-approved neutral detergent. A soft brush can be used to remove stains and stubborn dirt.
2. Wipe the entire chair from top to bottom. Do not use a dripping wet cloth.
3. Pay extra attention to the following surfaces:
  - Backrest
  - Seat (also underside, the seat is removable)
  - Footrests
  - Armrests
  - Handles
  - Bedpan guides
  - Wheels



You can also use a cleaning unit/cleaning system to clean your chair. The temperature in the system should be a maximum of 55°C.

### Disinfecting

4. Repeat the cleaning protocol - Cleaning after reading "Applying common cleaning/disinfectants to Lopital products" on page 3 of this document. Follow the manufacturer's directions for proper use of the disinfectant.
5. After disinfecting the chair, wipe the chair with a damp cloth and clean water to remove any residue from the disinfectant.

**The bedpan should be cleaned and disinfected in a bedpan washer after use.**

The bedpan washers/disinfectors are highly suitable for proper cleaning and disinfection of the bedpan. Bedpan washers/disinfectors have been developed to prevent the spread of pathogens, thus protecting not only patients or clients, but also staff. For example, in addition to cleaning, the machines perform a thermal disinfection in accordance with current guidelines and recommendations. This guarantees the highest hygiene standards.


## Marina basic & Marina deluxe – Shower trolley

61002000, 61002010, 61002050, 61002060

The Marina basic / Marina deluxe must be cleaned after every use, with water and regular household cleaning agents. Do not use any abrasive or other aggressive cleaning products. If necessary, the mattress can be disinfected with a solution of 70% ethanol or propanol.

For the best and most efficient cleaning of the mattress and the bed base, the mattress can be lifted up and removed. Dry the plate on which the mattress lies.

Check the wheels regularly for hairs and dust and remove when necessary. Maintenance and repairs to the Marina basic / Marina deluxe may only be carried out by authorised personnel.

Maintenance schedule	
After every use	<ul style="list-style-type: none"> <li>• Clean trolley with water and regular household cleaning products.</li> <li>• Clean and disinfect mattress.</li> <li>• Check to ensure all parts of the Marina basic / Marina deluxe are present.</li> </ul>
Weekly	<ul style="list-style-type: none"> <li>• Check wheels for hairs, dust and soap residues and remove if necessary.</li> <li>• Check that the trolley is still working correctly.</li> <li>• Charge the battery at least once a week.</li> </ul>
Annually  	<ul style="list-style-type: none"> <li>• According to the medical devices regulation MDR (EU) 2017/745 the Marina basic / Marina deluxe must be maintained in line with manufacturer's instructions. This process will preferably be carried out by Lopital or another authorised body. Lopital offers the option of having the trolley thoroughly inspected and serviced once a year via Periodic Preventative Maintenance.</li> </ul> <p>For more information about the maintenance contract, please contact Lopital (info@lopital.nl) or speak to your supplier.</p>

## Cleaning protocol

### Cleaning

1. Clean the trolley with a damp cloth with warm water and an institution-approved neutral detergent. A soft brush can be used to remove stains and stubborn dirt.
2. Wipe the entire trolley from top to bottom. Do not use a dripping wet cloth. For easy access to all parts of the trolley, adjust the trolley to both the highest and lowest position.
3. Pay extra attention to the following surfaces:
  - Mattress
  - Stretcher board
  - Side rails
  - Head and foot ends
  - Manual operation (with electrically powered trolley)
  - Foot pedal (with hydraulically powered trolley)
  - Brake pedals
  - On/off switch (with electrically powered trolley)
  - Emergency lowering button and emergency stop (with electrically powered trolley)
  - Lever Anti-trendelenburg position
  - Back adjustment lever (with hydraulically powered trolley)
  - Wheels



You can also use a cleaning unit/cleaning system to clean your trolley. The temperature in the system should be a maximum of 55°C.

### Disinfecting

4. Repeat the cleaning protocol - Cleaning after reading "Applying common cleaning/disinfectants to Lopital products" on page 3 of this document. Follow the manufacturer's directions for proper use of the disinfectant.
5. After disinfecting the trolley, wipe the trolley with a damp cloth and clean water to remove any residue from the disinfectant.


## Marina – Shower trolley

61002300, 61002305, 61002310, 61002320, 61002330, 61002345,  
61002350, 6100235, 61002360, 61002370, 61002380, 61002385

The Marina must be cleaned after every use, with water and regular household cleaning agents. Do not use any abrasive or other aggressive cleaning products. If necessary, the mattress can be disinfected with a solution of 70% ethanol or propanol.

For the best and most efficient cleaning of the mattress and the bed base, the mattress can be lifted up and removed. Dry the plate on which the mattress lies.

Check the wheels regularly for hairs and dust and remove when necessary. Maintenance and repairs to the Marina may only be carried out by authorised personnel.

Maintenance schedule	
After every use	<ul style="list-style-type: none"> <li>• Clean trolley with water and regular household cleaning products.</li> <li>• Clean and disinfect mattress.</li> <li>• Check to ensure all parts of the Marina are present.</li> </ul>
Weekly	<ul style="list-style-type: none"> <li>• Check wheels for hairs, dust and soap residues and remove if necessary.</li> <li>• Check that the trolley is still working correctly.</li> <li>• Charge the battery at least once a week.</li> </ul>
Annually  	<ul style="list-style-type: none"> <li>• According to the medical devices regulation MDR (EU) 2017/745 the Marina must be maintained in line with manufacturer's instructions. This process will preferably be carried out by Lopital or another authorised body. Lopital offers the option of having the trolley thoroughly inspected and serviced once a year via Periodic Preventative Maintenance.</li> </ul> <p>For more information about the maintenance contract, please contact Lopital (info@lopital.nl) or speak to your supplier.</p>

## Cleaning protocol

1. Before cleaning and disinfecting, unplug the product if applicable.

### Cleaning

2. Clean the trolley with a damp cloth with warm water and an institution-approved neutral detergent. A soft brush can be used to remove stains and stubborn dirt.
3. Wipe the entire trolley from top to bottom. Do not use a dripping wet cloth. For easy access to all parts of the trolley, adjust the trolley to both the highest and lowest position.
4. Pay extra attention to the following surfaces:
  - Mattress
  - Pillow
  - Stretcher board
  - Side rails
  - Head and foot ends
  - Manual operation (with electrically powered trolley)
  - Foot pedal (with hydraulic powered trolley)
  - Brake pedals
  - On/off switch (with electrically powered trolley)
  - Emergency lowering button and emergency stop (with electrically powered trolley)
  - Lever Anti-trendelenburg position
  - Wheels



You can also use a cleaning unit/cleaning system to clean your trolley. The temperature in the system should be a maximum of 55°C.

### Disinfecting

5. Repeat the cleaning protocol - Cleaning after reading “Applying common cleaning/disinfectants to Lopital products” on page 3 of this document. Follow the manufacturer’s directions for proper use of the disinfectant.
6. After disinfecting the trolley, wipe the trolley with a damp cloth and clean water to remove any residue from the disinfectant.

### Sirocco – Wall-Mounted shower trolley

61002400, 61002401

### Amfora – Wall-mounted Shower trolley

62005005, 62005010

### Vienna – Wall-mounted dressing table

65005015, 65005020

The trolley/ dressing table must be cleaned after every use, with water and regular household cleaning agents. Do not use any abrasive or other aggressive cleaning products. If necessary, the mattress can be disinfected with a solution of 70% ethanol or propanol.

For the best and most efficient cleaning of the mattress and the bed base, the mattress can be lifted up. Dry the plate on which the mattress lies.

Maintenance and repairs to the trolley/dressing table may only be carried out by authorised personnel.

Maintenance schedule	
After every use	<ul style="list-style-type: none"><li>• Clean trolley/dressing table with water and regular household cleaning products.</li><li>• Clean and disinfect mattress.</li><li>• Check to ensure all parts of the trolley/dressing table are present.</li></ul>
Weekly	<ul style="list-style-type: none"><li>• Check that the trolley/dressing table is still working correctly.</li><li>• Charge the battery at least once a week.</li></ul>
Annually	<ul style="list-style-type: none"><li>• According to the medical devices regulation MDR (EU) 2017/745 the trolley/dressing table must be maintained in line with manufacturer's instructions. This process will preferably be carried out by Lopital or another authorised body. Lopital offers the option of having the trolley/dressing table thoroughly inspected and serviced once a year via Periodic Preventative Maintenance.</li></ul> <p>For more information about the maintenance contract, please contact Lopital (info@lopital.nl) or speak to your supplier.</p>





## Cleaning protocol

### Cleaning

1. Clean the trolley/dressing table with a damp cloth with warm water and an institution-approved neutral detergent. A soft brush can be used to remove stains and stubborn dirt.
2. Wipe the entire trolley/dressing table from top to bottom. Do not use a dripping wet cloth. For easy access to all parts of the trolley, adjust the trolley to both the highest and lowest position.
3. Pay extra attention to the following surfaces:
  - Mattress
  - Pillow (Sirocco)
  - Stretcher board
  - Side rails
  - Head and foot ends
  - Manual control
  - Control box



### Disinfecting

4. Repeat the cleaning protocol - Cleaning after reading "Applying common cleaning/disinfectants to Lopital products" on page 3 of this document. Follow the manufacturer's directions for proper use of the disinfectant.
5. After disinfecting the trolley/dressing table, wipe the trolley with a damp cloth and clean water to remove any residue from the disinfectant.

### Stylex – Shower trolley

61003070

### Amfora – Shower trolley


62004010, 62004045, 62004011, 62004016

### Vienna – Dressing table

65004021, 65004026, 65004020, 65004025

The trolley / dressing table must be cleaned after every use, with water and regular household cleaning agents. Do not use any abrasive or other aggressive cleaning products. If necessary, the mattress can be disinfected with a solution of 70% ethanol or propanol.

Check the wheels regularly for hairs and dust and remove when necessary. Maintenance and repairs to the trolley/dressing table may only be carried out by authorised personnel.

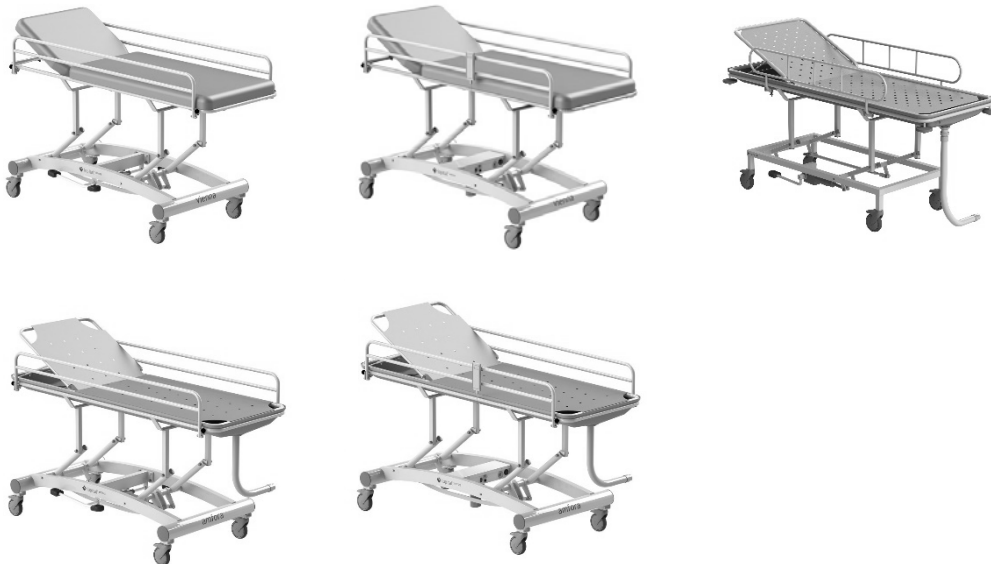
Maintenance schedule	
After every use	<ul style="list-style-type: none"><li>• Clean trolley/dressing table with water and regular household cleaning products.</li><li>• Clean and disinfect mattress.</li><li>• Check to ensure all parts of the trolley/dressing table are present.</li></ul>
Weekly	<ul style="list-style-type: none"><li>• Check wheels for hairs, dust and soap residues and remove if necessary.</li><li>• Check that the trolley/dressing table is still working correctly.</li><li>• Charge the battery at least once a week.</li></ul>
Annually 	<ul style="list-style-type: none"><li>• According to the medical devices regulation MDR (EU) 2017/745 the trolley/dressing table must be maintained in line with manufacturer's instructions. This process will preferably be carried out by Lopital or another authorised body. Lopital offers the option of having the chair thoroughly inspected and serviced once a year via Periodic Preventative Maintenance.</li></ul> <p>For more information about the maintenance contract, please contact Lopital (info@lopital.nl) or speak to your supplier.</p>

## Cleaning protocol

1. Before cleaning and disinfecting, unplug the product if applicable.

### Cleaning

2. Clean the trolley/dressing table with a damp cloth with warm water and an institution-approved neutral detergent. A soft brush can be used to remove stains and stubborn dirt.
3. Wipe the entire trolley/dressing table from top to bottom. Do not use a dripping wet cloth. For easy access to all parts of the trolley/dressing table, adjust the trolley/dressing table to both the highest and lowest position.
4. Pay extra attention to the following surfaces:
  - Trolley surface
  - Side rails
  - Manual operation (with electrically powered trolley)
  - Foot pedal (with hydraulic powered trolley)
  - Brake pedals
  - On/off switch (with electrically powered trolley)
  - Emergency lowering button and emergency stop (with electrically powered trolley)
  - Back adjustment button (with hydraulically powered trolley)
  - Wheels



You can also use a cleaning unit/cleaning system to clean your trolley/dressing table. The temperature in the system should be a maximum of 55°C.

### Disinfecting

5. Repeat the cleaning protocol - Cleaning after reading "Applying common cleaning/disinfectants to Lopital products" on page 3 of this document. Follow the manufacturer's directions for proper use of the disinfectant.
6. After disinfecting the trolley/dressing table, wipe the trolley/dressing table with a damp cloth and clean water to remove any residue from the disinfectant.


## Luxal – Shower trolley

61002200, 61002216

The Luxal must be cleaned after every use, with water and regular household cleaning agents. Do not use any abrasive or other aggressive cleaning products. If necessary, the mattress can be disinfected with a solution of 70% ethanol or propanol.

For the best and most efficient cleaning of the mattress and the bed base, the mattress can be lifted up. Dry the plate on which the mattress lies.

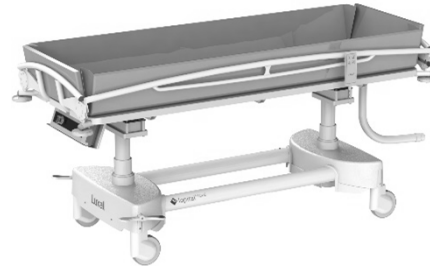
Check the wheels regularly for hairs and dust and remove when necessary. Maintenance and repairs to the Luxal may only be carried out by authorised personnel.

Maintenance schedule	
After every use	<ul style="list-style-type: none"> <li>• Clean trolley with water and regular household cleaning products.</li> <li>• Clean and disinfect mattress.</li> <li>• Check to ensure all parts of the Luxal are present.</li> </ul>
Weekly	<ul style="list-style-type: none"> <li>• Check wheels for hairs, dust and soap residues and remove if necessary.</li> <li>• Check that the trolley is still working correctly.</li> <li>• Charge the battery at least once a week.</li> </ul>
Annually 	<ul style="list-style-type: none"> <li>• According to the medical devices regulation MDR (EU) 2017/745 the Luxal must be maintained in line with manufacturer's instructions. This process will preferably be carried out by Lopital or another authorised body. Lopital offers the option of having the trolley thoroughly inspected and serviced once a year via Periodic Preventative Maintenance.</li> </ul> <p>For more information about the maintenance contract, please contact Lopital (info@lopital.nl) or speak to your supplier.</p>

## Cleaning protocol

### Cleaning

1. Clean the trolley with a damp cloth with warm water and an institution-approved neutral detergent. A soft brush can be used to remove stains and stubborn dirt.
2. Wipe the entire trolley from top to bottom. Do not use a dripping wet cloth. For easy access to all parts of the trolley, adjust the trolley to both the highest and lowest position.
3. Pay extra attention to the following surfaces:
  - Mattress
  - Pillow
  - Stretcher board
  - Side rails
  - Head and foot ends
  - Manual control
  - Brake pedals
  - Wheels



You can also use a cleaning unit/cleaning system to clean your trolley. The temperature in the system should be a maximum of 55°C.

### Disinfecting

4. Repeat the cleaning protocol - Cleaning after reading "Applying common cleaning/disinfectants to Lopital products" on page 3 of this document. Follow the manufacturer's directions for proper use of the disinfectant.
5. After disinfecting the trolley, wipe the trolley with a damp cloth and clean water to remove any residue from the disinfectant.

## Lotus – Rising aid

59008100

The Lotus must be cleaned after every use, with water and regular household cleaning agents. PUR integrated foam components with IMC coating should be rubbed clean and disinfected. Do not use any abrasive or other aggressive cleaning products. If necessary, the PUR components can be disinfected with a solution of 70% ethanol or propanol.

The time the products must be left on the components has a significant impact upon the lifespan of the PUR components. As a result of the material properties of PUR, contact with sharp objects must be avoided. This could lead to damage or tears in the material.

Finally, we would like to point out that non-critical parts of the PUR components must also be cleaned and disinfected.

Check the wheels regularly for hairs, dust and soap residues and remove when necessary. Maintenance and repairs to the Lotus may only be carried out by authorised personnel.

Maintenance schedule	
After every use	<ul style="list-style-type: none"><li>• Clean the Lotus with water and regular household cleaning products.</li></ul>
Weekly	<ul style="list-style-type: none"><li>• Check wheels for hairs, dust and soap residues and remove if necessary.</li><li>• Check that the trolley is still working correctly.</li></ul>
Annually	<ul style="list-style-type: none"><li>• According to the medical devices regulation MDR (EU) 2017/745 the Lotus must be maintained in line with manufacturer's instructions.</li></ul>

## Cleaning protocol

### Cleaning

1. Clean the Lotus with a damp cloth with warm water and an institution-approved neutral detergent. A soft brush can be used to remove stains and stubborn dirt.
2. Wipe the entire Lotus from top to bottom. Do not use a dripping wet cloth. For easy access to all parts of the Lotus, adjust the legs to both the wide and narrow position.
3. Pay extra attention to the following surfaces:
  - Seat parts
  - Lower leg supports
  - Frame (especially where the user holds)
  - Handles
  - Foot plate
  - Pedals leg spread
  - Wheels



You can also use a cleaning unit/cleaning system to clean your chair. The temperature in the system should be a maximum of 55°C.

### Disinfecting

4. Repeat the cleaning protocol - Cleaning after reading "Applying common cleaning/disinfectants to Lopital products" on page 3 of this document. Follow the manufacturer's directions for proper use of the disinfectant.
5. After disinfecting the Lotus, wipe the Lotus with a damp cloth and clean water to remove any residue from the disinfectant.



For more information, visit our website: [www.lopital.com](http://www.lopital.com)

Lopital Nederland B.V. Laarakkerweg 9, 5061 JR Oisterwijk, Postbus 56, 5060 AB Oisterwijk  
Tel +31 (0)13 5239300, E-mail [info@lopital.nl](mailto:info@lopital.nl), [www.lopital.com](http://www.lopital.com)



REI-DES-01 05-2021